

Specifications

LE15GT



PERFORMANCE

Working height, max.	14,70 m
Horizontal outreach with 200 kg	7,60 m
Up and Over Clearance, max.	5,40 m
Basket capacity	200 kg
Movable jib	-
Turret rotation	355°
To be jacked up on ground slope of	13°/23,0 %
Height and width track adjustment	12/18 cm*
Gradeability, max.	16,7°/30,0 %
Slope angle	16,7°/30,0 %
Travel speed	1,0 km/h

MEASUREMENTS

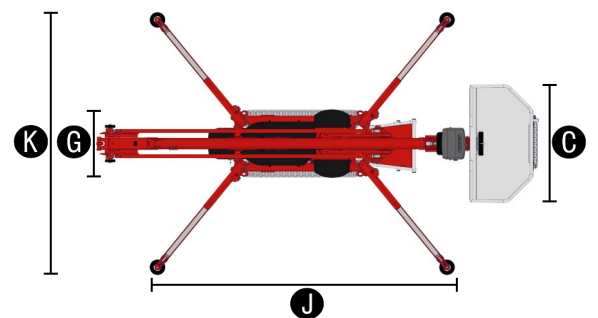
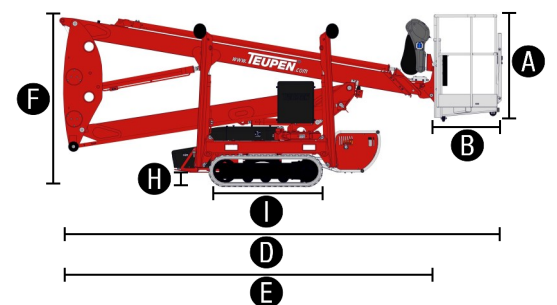
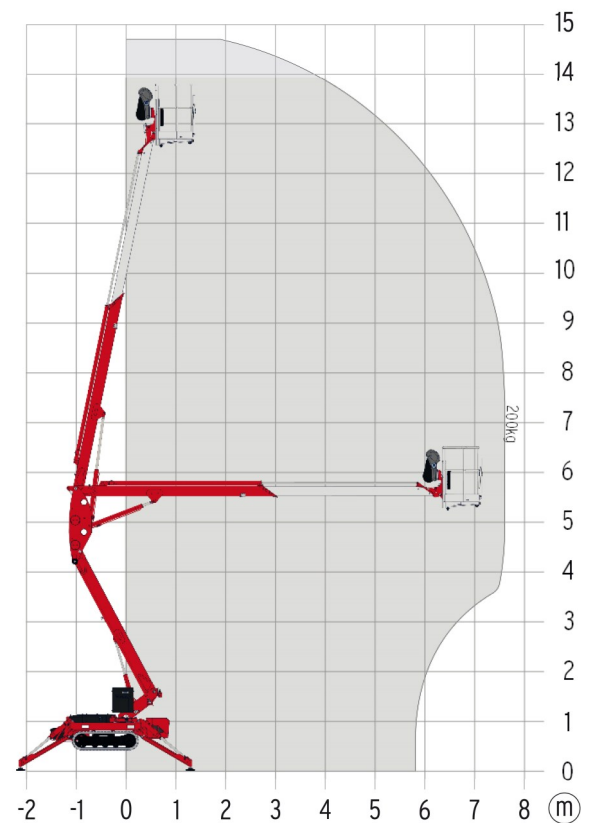
Platform height (A)	1,10 m
Platform length (B)	0,70 m
Platform width (C)	1,40 m
Length, overall (D)	5,25 m
Length without basket (E)	4,52 m
Height, travel position (F)	1,99 m
Width, minimal overall width (G)	0,78 m
Ground clearance, max. (H)	0,42 m
Track (L x W) (I)	133 x 18 cm
Length outrigger footprint, max. (J)	3,61 m
Width outrigger footprint, max. (K)	3,15 m
Outrigger plate Ø	0,18 m

WEIGHT

Total weight	1780 kg
Live load in travelling position	4,63 kN/m ²
Live load in working position	1,96 kN/m ²
Point load per outrigger plate, max.	12,80 kN

POWER

Standard power sources (electric and combustion engine)	1) Electric: 230 V, 12,9 A, 2,2 kW 2) Petrol: Robin-Subaru EX21 (3,7 kW/5,0 hp)
Optional power source	Diesel: Hatz 1B30 (5,4 kW/7,3 hp)
Fuel tank capacity petrol engine	3,6 l
Fuel tank capacity Diesel engine	5,0 l



STANDARDS COMPLIANCE

2006/42/EC-Machinery directive
 (Harmonised standard EN280:2001 + A2:2009); 2004/108/EC (EMC);
 2000/14/EC (Noise emission directive – outdoor)

*optional

Features

LEO 15 GT



CHASSIS

- Powerful track drive for precise maneuvering and terrainability
- White, non-marking rubber tracks with specially arranged profile providing optimum grip

STABILISATION

- Fully-hydraulic, automatic levelling system
- Constant outrigger setup monitoring with ground pressure sensing
- Wear resistant, anti-friction PVC outrigger feet

BOOM SYSTEM

- Removable cable remote control
- All functions are available from one control panel
- Electric-proportional controls with intuitive operator guidance
- Robust, lockable control panel cover
- Self-levelling platform with fully-hydraulic levelling system
- Boom rotation via high-performance slew ring, worm gear and hydraulic motor
- Detachable two-person basket with eyelets for safety harnesses
- Emergency lowering system via hand pump
- 355° turntable rotation

POWER

- 230 V electric motor (EU)
- Petrol engine Robin-Subaru EX21 (3,7 kW/5 hp) incl. mount and cover
- Start-Stop switch of combustion engine in the basket

PRODUCTIVITY, SAFETY, QUALITY

- Sturdy base frame with full length forklift pockets
- 230 V (EU) power outlet in the basket
- High-quality paint in RAL 3020 (red)
- Drive operation without basket available
- Cables and hoses are safely routed through the boom structure
- Biodegradable hydraulic oil
- Lock valves - hydraulic return valves directly on all hydraulic cylinders
- Relief valves protecting the hydraulic system from too high pressures
- Protective covers for oil-tank, emergency controls and connecting cables and hoses
- Protective covers for electric housing and ground control panel
- Hour meter
- Fuzzy IV control technology

OPTIONS

- Hatz 1B30 Diesel engine (5,4 kW/7,3 hp) instead of petrol engine
- Custom paintwork, one colour, according to RAL scheme (except metallic coatings, signal- or special colors)
- Custom paintwork, two colours, according to RAL scheme (except metallic coatings, signal- or special colors)
- Mechanically height- und width-adjustable track chassis

ACCESSORIES

- Safety harness
- Outrigger pad (450 x 400 x 40 mm)
- Lockable storage frame for outrigger pads (additional weight: approx. 4 kg)
- 4 outrigger/sliding pads (700 x 220 x 60 mm)
- Track mat (2000 x 800 x 15 mm)
- Lifting device (200 kg)
This option can only be ordered in combination with the mounting for the lifting device.
- Mounting for lifting device
- 4 covers on piston rod (outrigger/stabiliser) cylinders

TRAILERS

- Tandem Low Platform trailer (aluminium) including 4 tension belts (length 3,50 m)
Permissible total weight: 3000 kg
Tandem rubber-sprung axle: 3000 kg
Net weight: approx. 440 kg
Wheels 155/70/R12 ET20
Lighting fitting according to EU directives
- Tandem Low Platform trailer (steel) including 4 tension belts (length 5,30 m)
Permissible total weight: 3000 kg
Tandem rubber-sprung axle: 3000 kg
Net weight: approx. 476 kg
Wheels 185 R14 C8
Lighting fitting according to EU directives

CONTACT

Teupen Maschinenbau GmbH
Marie-Curie-Str. 13
48599 Gronau
Germany

phone +49 (0) 2562 8161-0
fax +49 (0) 2562 8161-888
mail@teupen.com

